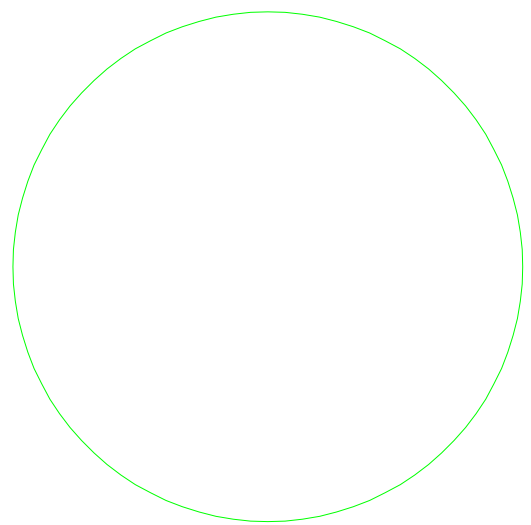
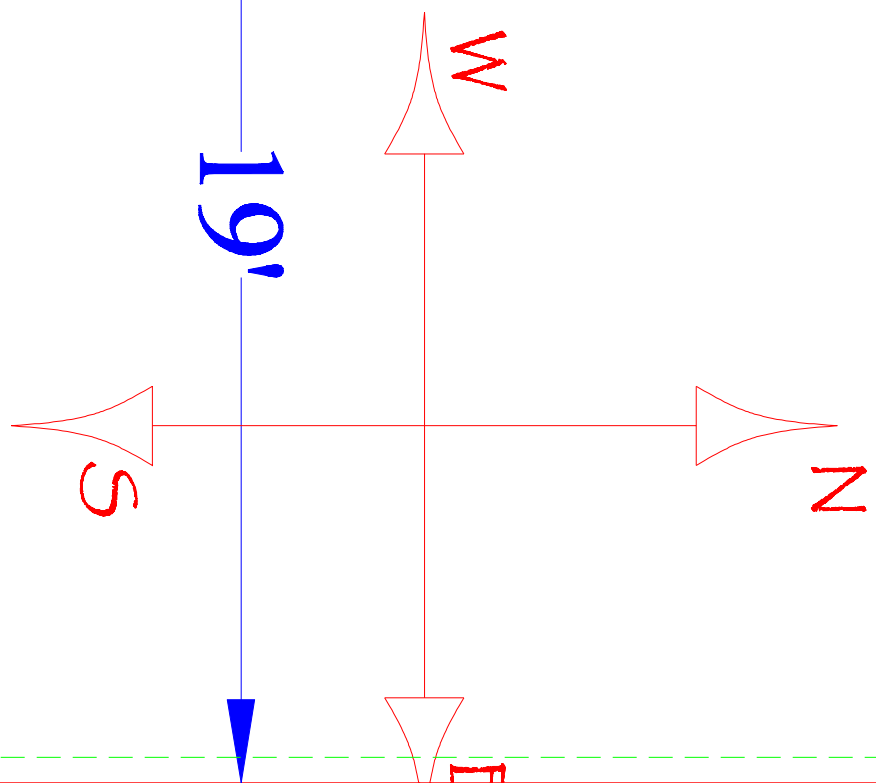


Grass



Possible Support Locations



25'-6"

19'

10 PORT SINGLE SIDED RACK

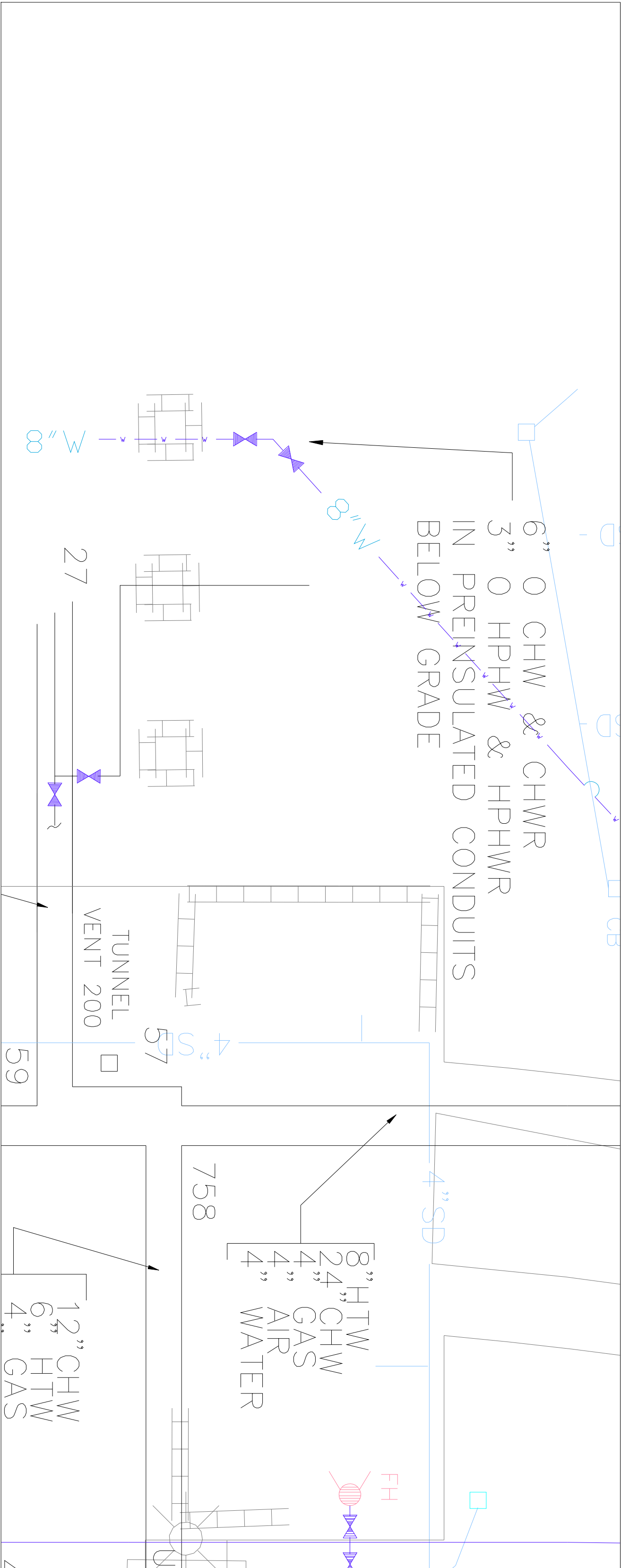
bike path projection

Increase distance between

46'-8"

Remove bike rack from site

UTILITY MAP



CONSTRUCTION NOTES:
1. ELECTRICAL CONDUIT (DI" PVP) IS LOCATED AT THE BOTTOM CENTER OF THE CONTROL MODULE AND WILL BE TUNNELED THROUGH THE CONCRETE PERPENDICULAR TO THE GROUND.

2. TAKE ALL MEASUREMENTS OFF THE CURBSIDE OR NEAREST CONCRETE EMPLACEMENT.

3. ALL LANDSCAPE WITHIN WORK AREA SHALL BE REMOVED.

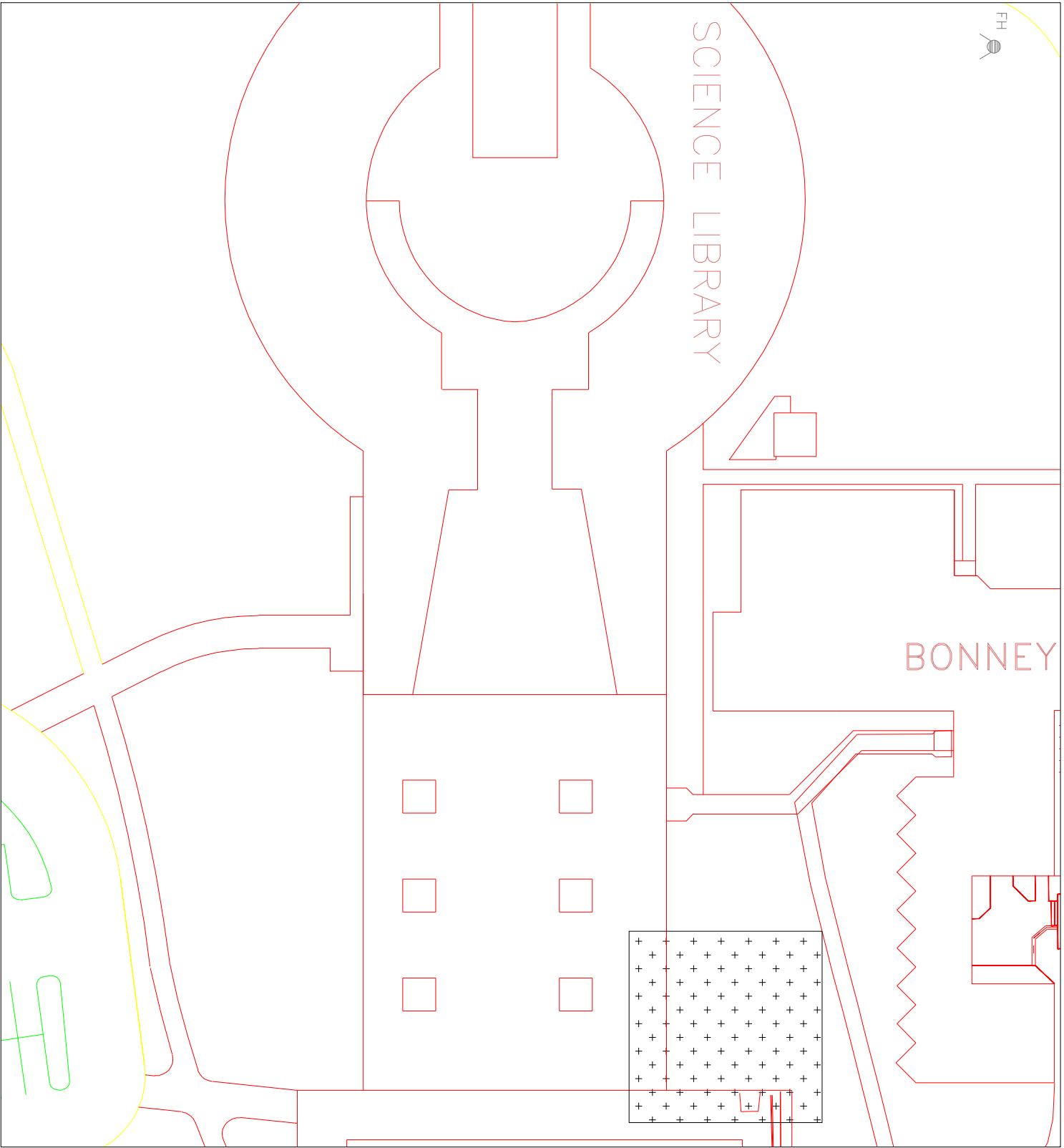
4. ALL PEDESTRIAN AND TRAFFIC SIGNS SHALL BE REMOVED AND RELOCATED WITHIN THE VICINITY.

5. UTILITY MAP CONTAINS APPROXIMATIONS ONLY OF UTILITY LINES LOCATED IN THE WORK AREA.

6. BIKE RACKS WILL BE PLACED IN A DIRECTION GOING EAST TO WEST.

7. IMPORTANT: ACTUAL LOCATIONS OF THE RACKS WITH IN THE CONCRETE PADS ARE NOT GIVEN. THEY WILL BE CENTERED IN THE PAD LEAVING 4'-5" BETWEEN BIKE PATH PROJECTIONS AND PAD BOUNDARIES WITH THE EXCEPTION OF CORNERS WHERE CONCRETE EMPLACEMENTS ALREADY EXISTS.

KEY MAP



Bike Rack

Site 2: Science Library

DATE CREATED: 10/27/08
SCALE:

UPDATED:
PLOTTED:

DRAWN BY: Alberto Valencia
DRAWN BY: Andres Miramontez
DRAWN BY: Nicolas Arias
DRAWN BY:
CHECKED BY:
CHECKED BY:

NO.	DATE	COMMENTS
1		
2		
3		
4		
5		
6		
7		
8		
9		
10		



SHEET

4 OF 6